



358 Main Street

, Wishaw, ML2 7NG

£750 Per month

A spacious unfurnished Town Centre top floor apartment with Period Features, available 1 March.

Comprising a great sized Lounge with high ceilings and picture windows. Two Double Bedrooms with excellent storage space and master en suite. Bathroom. Modern Fitted Kitchen with appliances, washing machine, hob, oven and fridge freezer. Gas Central Heating and Double Glazing. Private residents parking to the rear

EPC D

LARN1812008

LR 620187/320/09111

Viewing

Please contact our Pomphreys Properties Ltd Office on 01698373365 if you wish to arrange a viewing appointment for this property or require further information.

- Excellent Decorative Order
- Two double bedrooms with master en suite
- Period Features
- Unfurnished and available 1 March
- Central Location - All transport facilities to hand including Railway Station
- Residents Parking to rear
- Double Glazing & Gas Central Heating



2



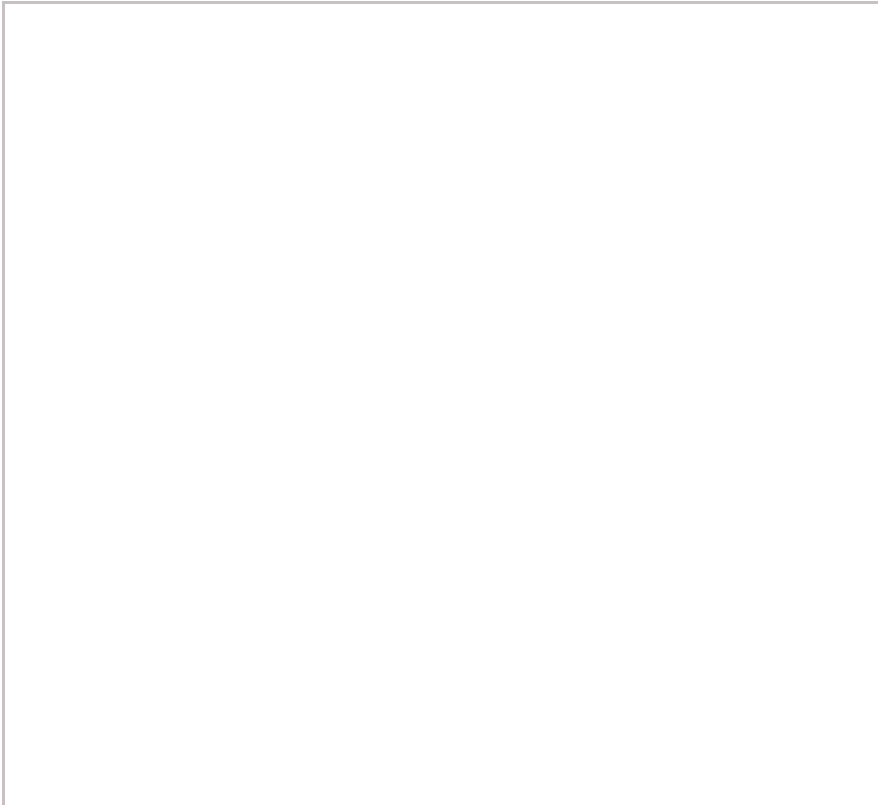
2



1



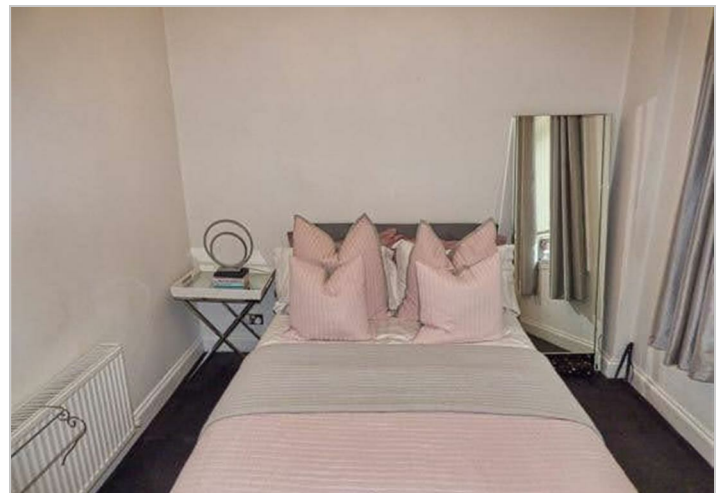
Floor Plan



Area Map



Energy Efficiency Graph



These particulars, whilst believed to be accurate are set out as a general outline only for guidance and do not constitute any part of an offer or contract. Intending purchasers should not rely on them as statements of representation of fact, but must satisfy themselves by inspection or otherwise as to their accuracy. No person in this firm's employment has the authority to make or give any representation or warranty in respect of the property.